

Vehicle Specific Guide

Freightliner Cascadia 2008-2021

Please note that this is a reference guide for informational purposes only. Not every vehicle make, model and year will have the same installation connections as depicted in this guide. Please follow Lytx best practices and standards for installations which includes the testing of all connections

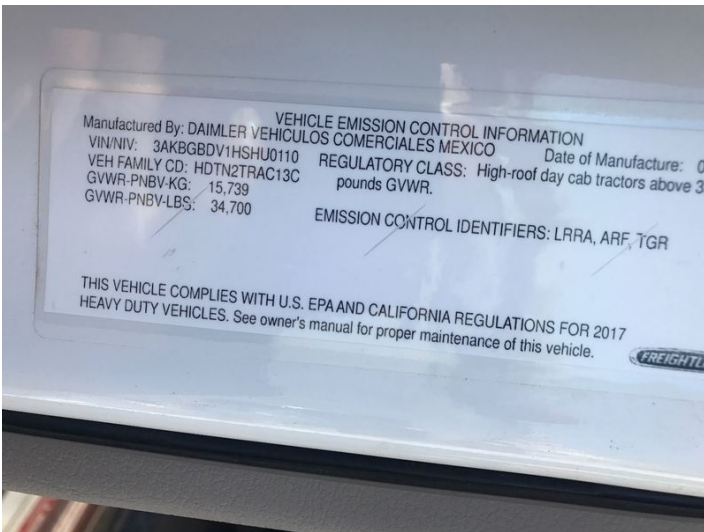


Year	2018
Year Range Covered	2008-2021
Make	Freightliner
Model	Cascadia
Body Style (If Applicable)	

Vehicle Exterior



Vin plate



Location of Power Connections



Location of Power Connections Comments

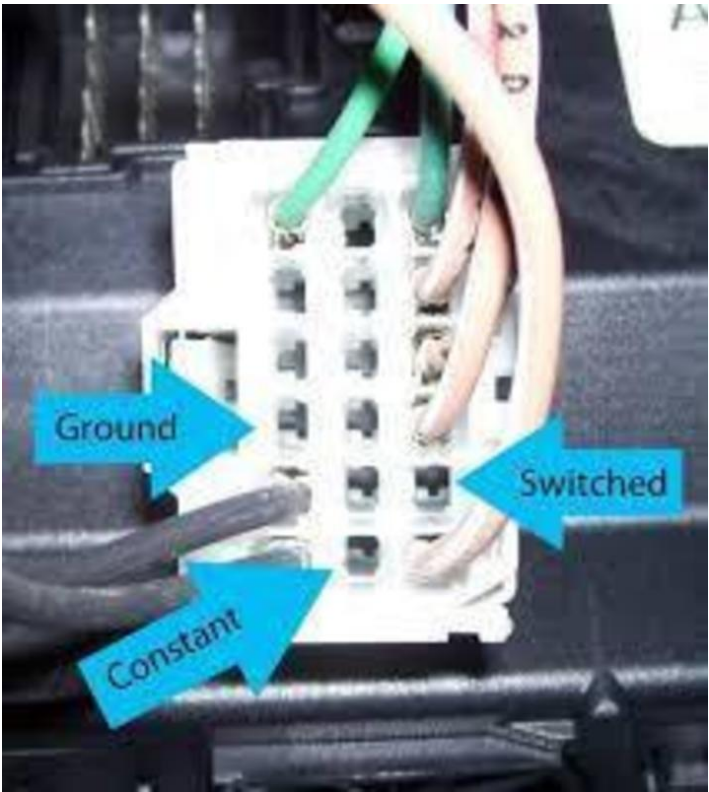
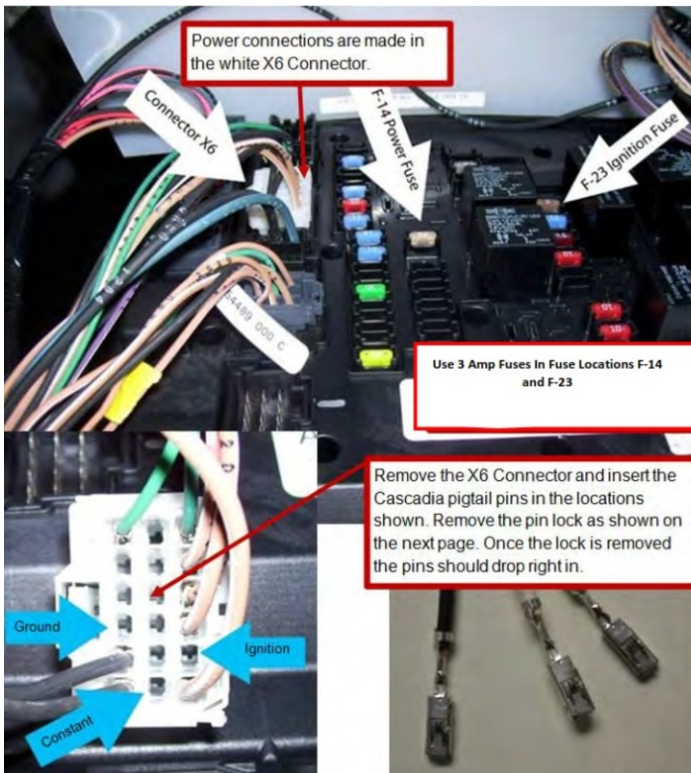
Connections will be made behind glove box on the passenger side dash at the sam module/fuse box.

Consumables

Consumable List

3 amp and 5 amp atm "mini" fuse

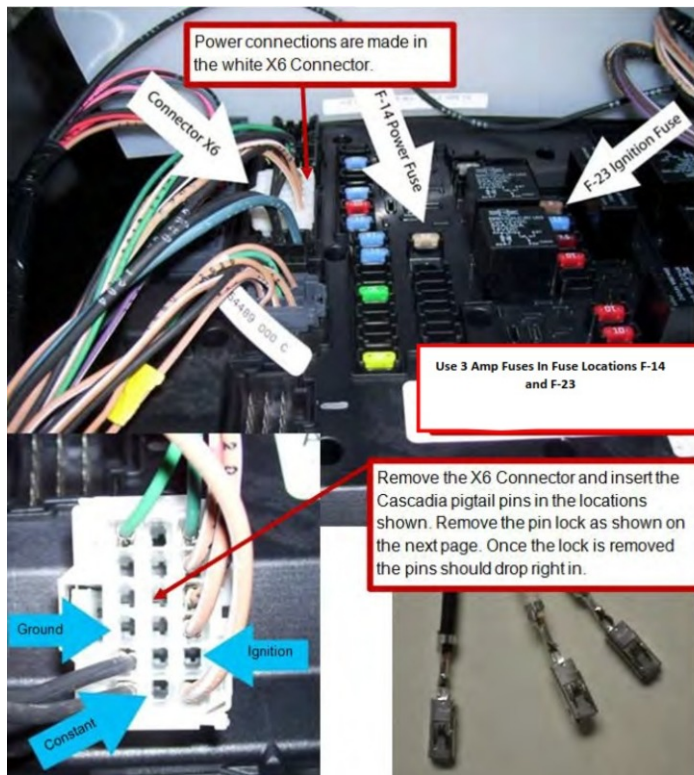
Constant Power Source



Constant Description

12v+ constant will be made in connector x6 (white plug) using OEM pin. A 5 amp fuse will need to be added to slot F14.

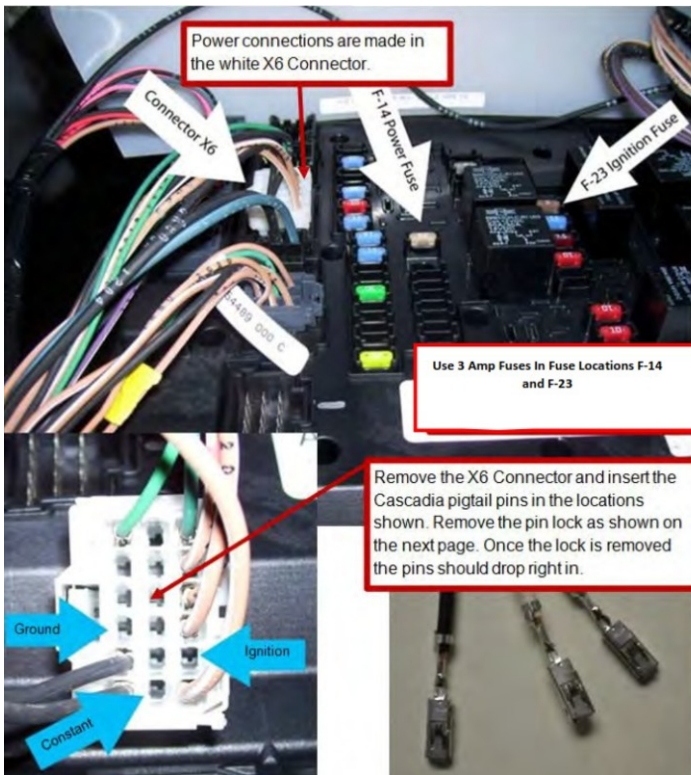
Ignition Source



Ignition Description

12v+ ignition will be made in the X6 white connector using the OEM pin. A 3 amp fuse will need to be added to slot F23

Chassis Ground

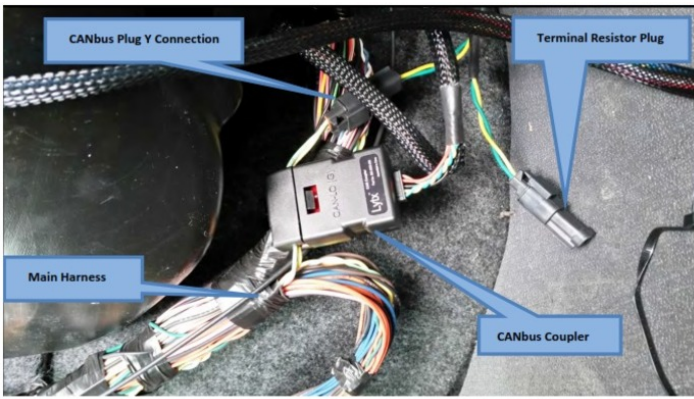


Ground Description

Ground will be made in the X6 white connector using the OEM pin as shown.

Diagnostic Port Photos

ECM Location



ECM Location Description

The CAN bus coupler is attached to the J1939 backbone before the backbone wires enter into the Y-connector and terminal resistor plug as shown below. This connection is below and to the left of the fuse box.

Event Recorder Mounting with Placement Reference



Event Recorder Mounting Measurements

Screen shot of exterior and interior view



All Cable Routing



Cable Routing Comments

Camera cable will run above headliner, down the a-pillar, and route behind the glove box to the fuse panel/sam module.

Turn signal Hardwire Location (if applicable)

Turn Signal Method

CAN Coupler

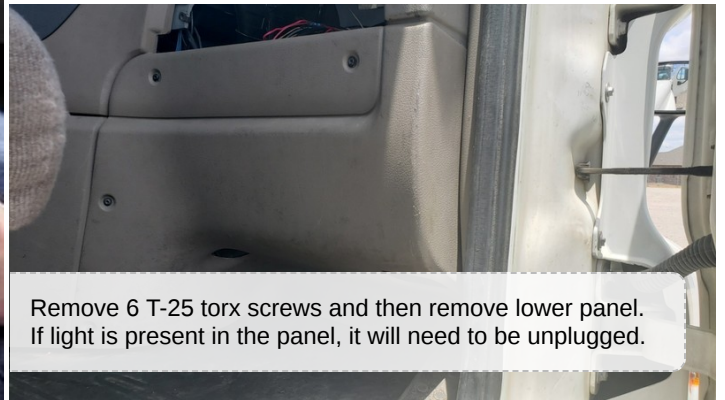
Panel Removal



Remove the 2 T-45 torx bolts, remove handle and a-pillar.



Unscrew 4 T-25 torx from glove compartment and remove



Remove 6 T-25 torx screws and then remove lower panel. If light is present in the panel, it will need to be unplugged.

Panel Removal Instructions with Screw Types

*see captions on pictures

Other Photos

Other Comments

|